

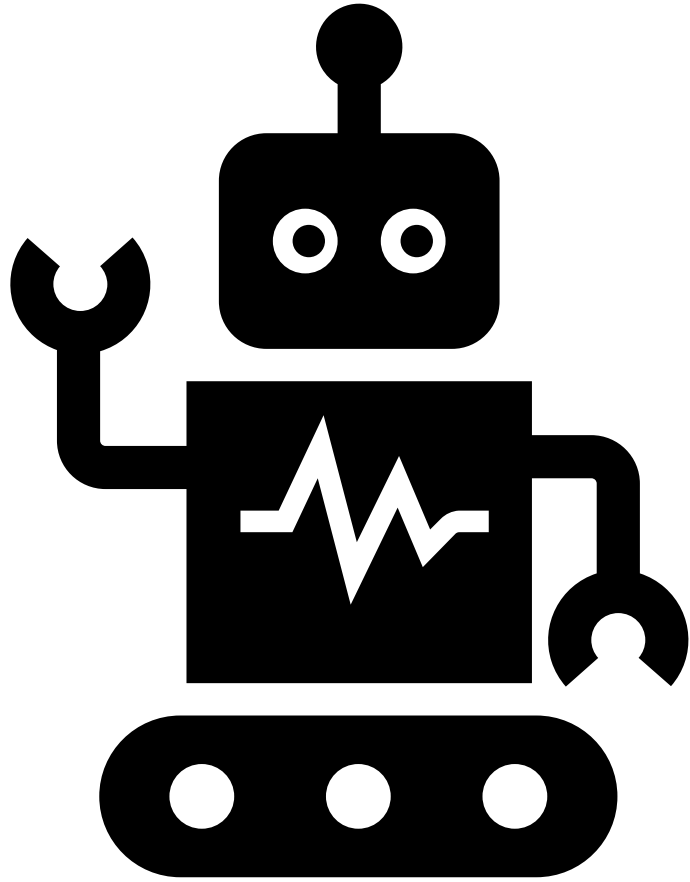


SciBite

The #cleandata company

THE LANGUAGE OF SCIENCE

Machine Learning/AI initiatives?



Harvard
Business
Review

DATA

If Your Data Is Bad, Your Machine Learning Tools Are Useless

by Thomas C. Redman

APRIL 02, 2018

Harvard
Business
Review

DATA

Only 3% of Companies' Data Meets Basic Quality Standards

by Tadhg Nagle, Thomas C. Redman, and David Sammon

SEPTEMBER 11, 2017


Pistoia Alliance

Data Quality in support of AI/ML: Pistoia Alliance CoE for AI Webinar Series

Date: 10 Dec 2018: 4pm - 5pm GMT, 11 am ET/5pm CET

Ontologies Are The Key To Unlocking FAIR



F indable A ccessible I nteroperable R eusable



Image credit: Sungya Pundir, Wikimedia Commons CC BY-SA 4.0

€10.2bn

Can you afford not
to adopt FAIR?



Cost-benefit analysis for FAIR research data

...Therefore, we are confident that the true cost of not having FAIR research data is much higher than the estimated **€10.2bn** per year...

<http://bit.ly/fairify>



Our Purpose

Combining world class ontologies & machine learning to revolutionise the access to and utilisation of scientific information

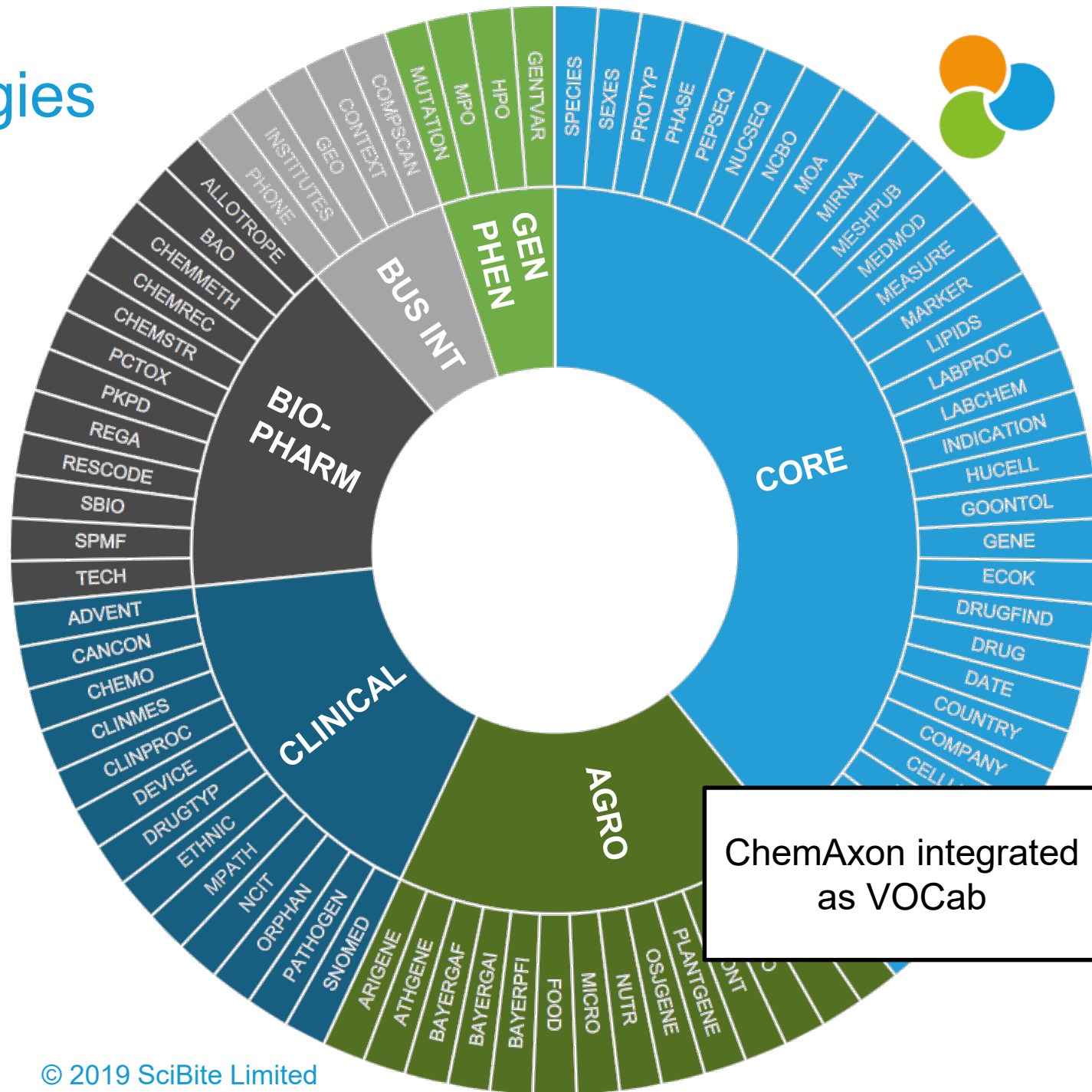
Transforming unstructured text into contextualised, machine readable data suitable for new discovery



VOCabs : Beyond Ontologies

at the heart of everything!

- Maintained by our dedicated team using expert curation and machine learning
- Comprehensive coverage
- Aligned to industry standards to maintain interoperability
- Enriched with synonyms and rules to manage the complexity of scientific language
- Customize, augment our existing or deploy your own vocabularies



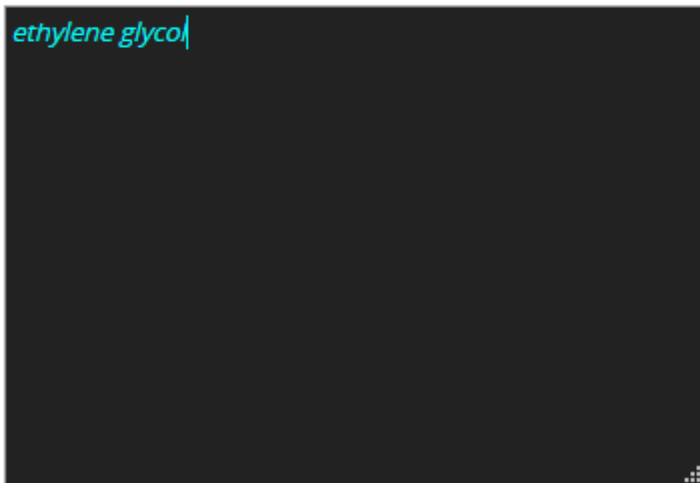
ChemAxon Integration - Example



ChemAxon lookup service seamlessly integrated into TERMite, SciBite's Biomedical Named Entity Recognition tool

Explore TERMite [Show/Hide]

Just Type Below! *(Example)*



As-You-Type Results

Summary

ethylene glycol

Termite Hits

Poor quality (ambiguous) hits shown in red/grey and should be treated with much caution, often users filter these out of their results as they are of low accuracy.

Type	Name	ID	Hit Synonyms	Poor
CA_LOCAL	ethylene glycol	ethylene glycol	ethylene glycol	N

SciBite Semantics Empower Scientific Infrastructure



Data Stewardship

F.A.I.R & Search

Data Mining & AI



Semantic MDM

Smart Data Entry

Improve Integrity

F.A.I.R Data Catalogues

Semantic Search

Analytics & ML/A.I

Semantic Q&A

Knowledge Graphs

Electronic Lab Notebooks

Ontology Management

Genomic Data Processing

Clinical Data Search

Pharmacovigilance

Phenotype Triangulation

Assay Registration

Enterprise Search

Horizon Scanning

Outcomes Prediction

Asset Management

Portfolio Analytics

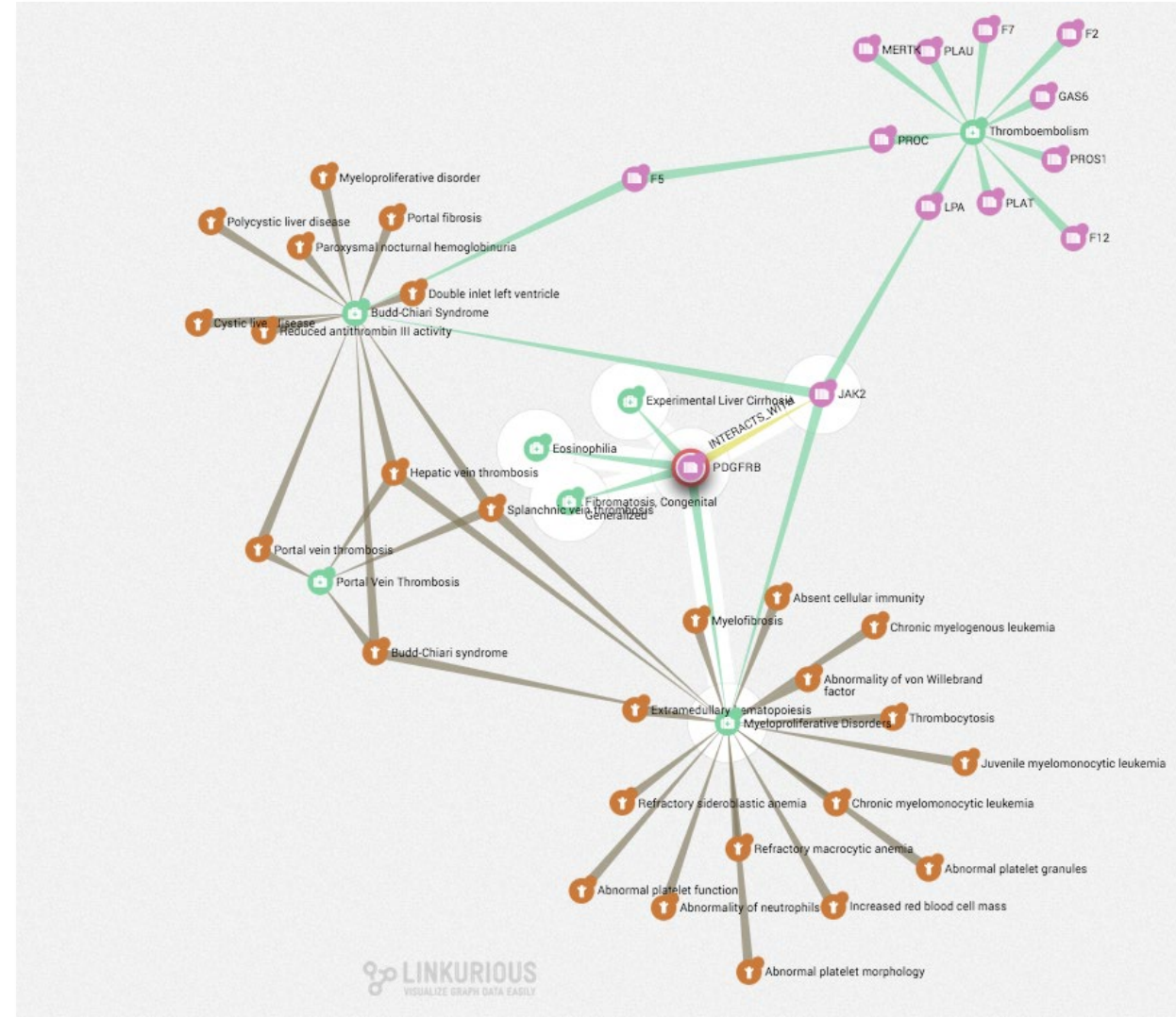
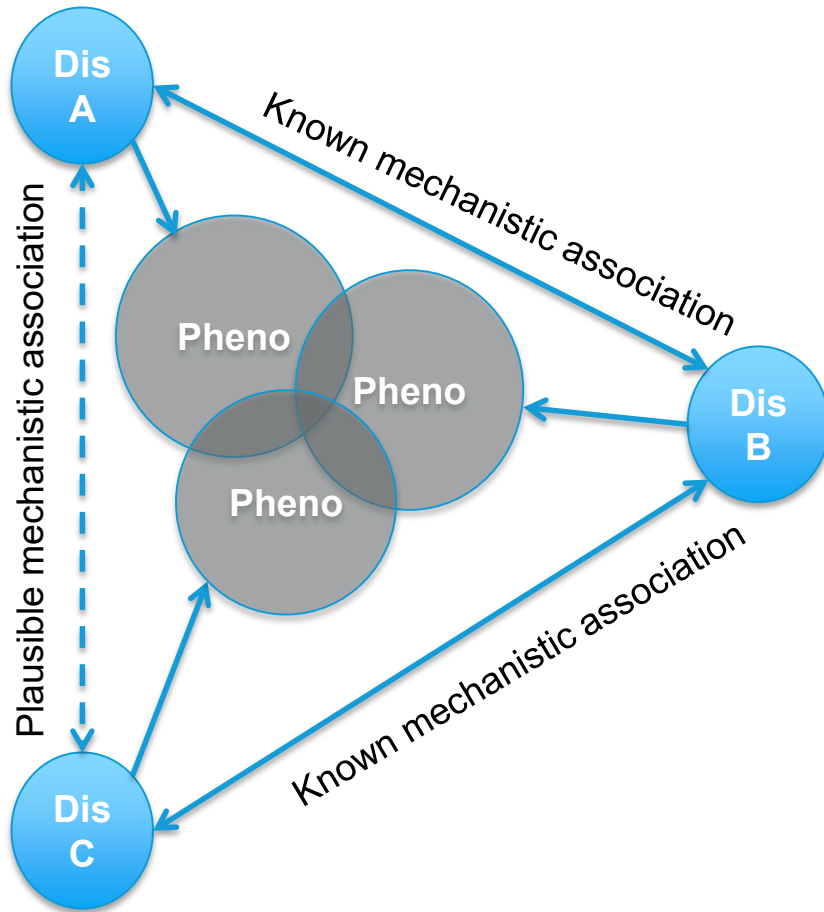
L.I.M.S.

Departmental Search

Drug Repurposing

Diagnostic prediction

Phenotype triangulation



Building network views of disease-phenotype mappings

Adding Best-in-Class Chemistry Enables Repurposing



By layering in ChemAxon's Named Chemical Entity Extraction, we expand the use of Phenotype Triangulation to Drug Repurposing at-scale

